

**Dual Running Man Lateral Non-Turning  
Target Carrier Model LDR3000**



## **TECHNICAL DATA**

### **AT A GLANCE**

- Carrier body is made of 11-gauge steel, skeletonized to reduce weight
- 3 speeds and continuous run mode offer flexibility in creating shooting scenarios
- Each Running Man moves independently
- Can be mounted on ground or overhead

### **DESCRIPTION:**

The Dual Running Man Lateral Non-Turning Target Carrier is designed in such a way that its track can be mounted either overhead or on the ground. The body of the carrier is fabricated of 11-gauge steel and is skeletonized to reduce weight. The target is stapled to standard 1" x 2" wood strapping held in clamps on the carrier. Transport wheels are of a ball bearing style with low friction for smooth travel and are protected by the carrier enclosure. The system is controlled from the Touch Plus™ Master Control Screen. The carrier is capable of operating at three speeds that can be changed at any time. Each Running Man carrier moves independently to one another, allowing for greater versatility in the creation of shooting scenarios.

### **SIZE:**

26.50"L x 5.27"W x 11.63"H

### **WEIGHT:**

19 lbs

### **FINISH:**

Yellow Zinc Dichromate

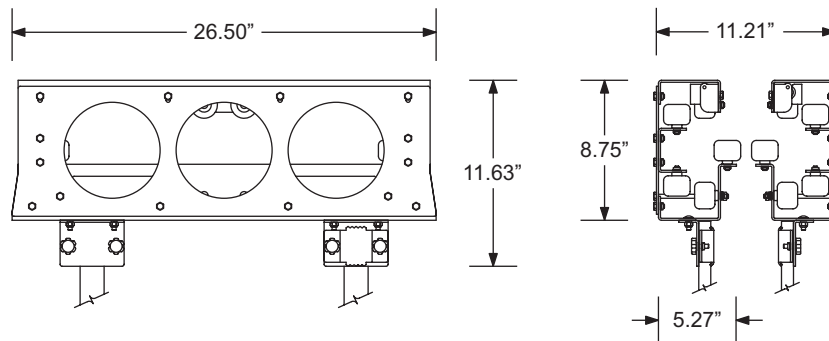
**INNOVATION. NOT IMITATION.**

**Dual Running Man Lateral Non-Turning  
Target Carrier Model LDR3000**



# ARCHITECTS' & ENGINEERS' SPECS

The Dual Running Man Target Carrier shall be suspended from an overhead track or be mounted on the ground behind protective barriers (to be provided by others). The carrier housing shall be fabricated of 11-gauge plated steel and shall be skeletonized to reduce weight. The transport wheels shall be of a ball bearing style with low friction for smooth travel and shall be protected by the carrier enclosure. The track shall be the Accutrac™ 11-gauge satin-coated track with special spacers to allow dual running man operation. The two carriers shall travel parallel to one another 5" apart. The drive unit shall allow the carrier to be moved laterally without hitting dead stops and shall allow operation of the carrier from the Touch Plus™ Master Control Screen. The carrier shall be able to reverse automatically and shall have three speeds. The system shall allow for the option of continuous motion or of changing speeds at any time.



All specifications and design details are subject to change without prior notice. All rights reserved. © 11.04

**INNOVATION. NOT IMITATION.**